

## Collaborative R&D ecosystem for AI platform

**Soonmin Bae<sup>\* §</sup> and Wooyoung Lim**

*AI2XL, Institute of Convergence Technology, KT, Seoul, Korea*

*soonmin.bae, wooyoung.lim@kt.com*

South Korea is well known for its ICT readiness, use, and capability. It has been ranked first or second in the ICT Development Index (IDI) for many years [1]. Korea Telecom (KT) launched the world's first nationwide commercial fifth-generation (5G) wireless network in April 2019 after showcasing the world's first 5G services at the 2018 Winter Olympics in PyeongChang. Moreover, South Korea Government has declared its vision to become an AI powerhouse beyond an IT powerhouse in 2019. Since then, many efforts have been made to develop infrastructure and ecosystems by planning national strategies and establishing AI graduate schools. Leading companies such as NAVER and KT are building collaborative R&D ecosystems connecting industries and universities.

In particular, KT has transformed itself from a telecommunication company to a digital platform company. KT is recently focusing on artificial intelligence, big data, and cloud computing businesses and has launched AI One Team. AI One Team consists of companies from different sectors including financial services firms, heavy industries, consumer electronics companies, food manufacturer, telecommunication companies and world leading universities and research institutes. They share on-going project issues and data, solve problems collectively, and develop AI employee training programs together.

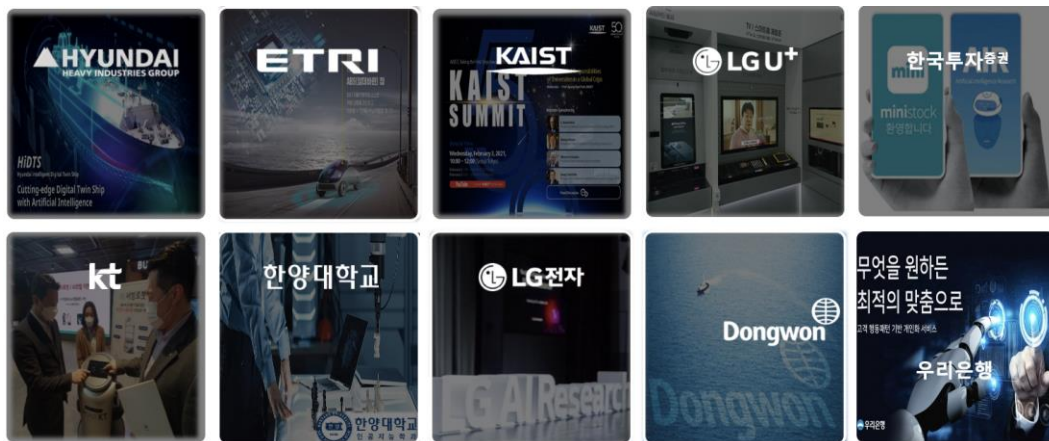


Figure: AI One Team

In this talk, I will talk about how these collaborative effects are solving real-world problems.

[1] International Telecommunication Union. Measuring the Information Society Report 2017.  
[https://www.itu.int/en/ITU-D/Statistics/Documents/publications/misr2017/MISR2017\\_Volume2.pdf](https://www.itu.int/en/ITU-D/Statistics/Documents/publications/misr2017/MISR2017_Volume2.pdf).